

Flute Major Arpeggios (#)

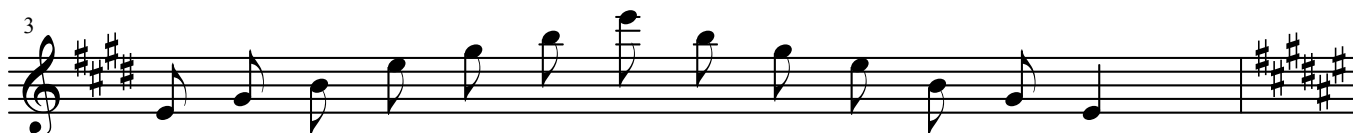
Arranged by Raymond Robinson



C Major (2 Octaves)



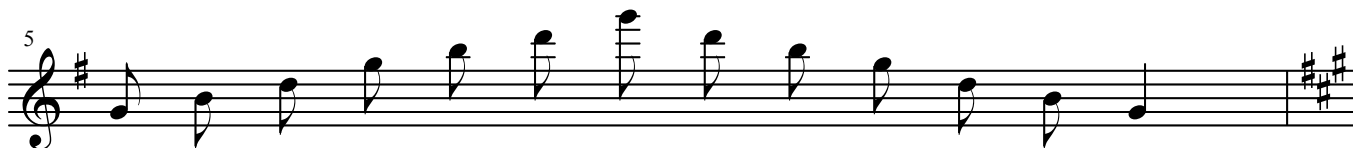
D Major (2 Octaves)



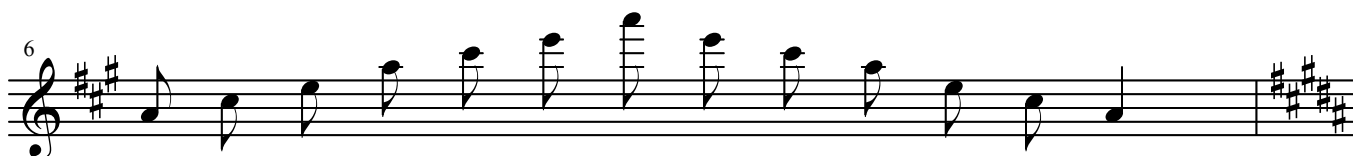
E Major (2 Octaves)



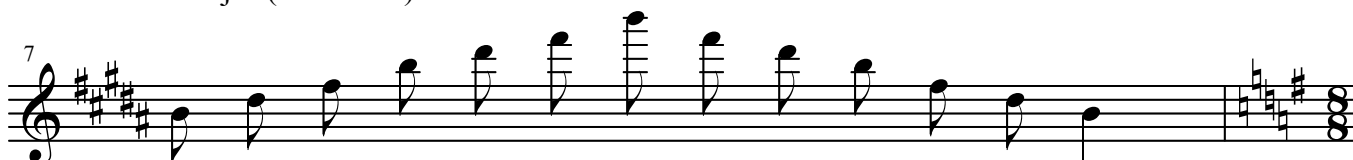
F# Major (2 Octaves)



G Major (2 Octaves)




A Major (2 Octaves)



B Major (2 Octaves)

Major Arpeggios (#)

8



G Major (1 Octave)

The first staff shows a G Major arpeggio spanning one octave. It begins with a treble clef, a key signature of one sharp (F#), and a 3/8 time signature. The notes are G4, B4, D5, B4, G4, F#4, E4, D4, C#4, B3, G3, and F#3. The piece concludes with a double bar line, a key signature change to four sharps (F#, C#, G#, D#), and a 14/8 time signature.

9



C# Major (2 Octaves)

The second staff shows a C# Major arpeggio spanning two octaves. It begins with a treble clef, a key signature of four sharps (F#, C#, G#, D#), and a 14/8 time signature. The notes are C#5, E#5, G#5, E#5, C#5, B#4, A#4, G#4, F#4, E#4, C#4, B#3, A#3, G#3, F#3, E#3, C#3, and B#2. The piece concludes with a double bar line, a key signature change to five sharps (F#, C#, G#, D#, A#), and a 20/8 time signature.

10



C Major (3 Octaves)

The third staff shows a C Major arpeggio spanning three octaves. It begins with a treble clef, a key signature of no sharps or flats, and a 20/8 time signature. The notes are C6, E6, G6, E6, C6, B5, A5, G5, F5, E5, C5, B4, A4, G4, F4, E4, C4, B3, A3, G3, F3, E3, C3, B2, A2, G2, F2, E2, C2, and B1. The piece concludes with a double bar line.