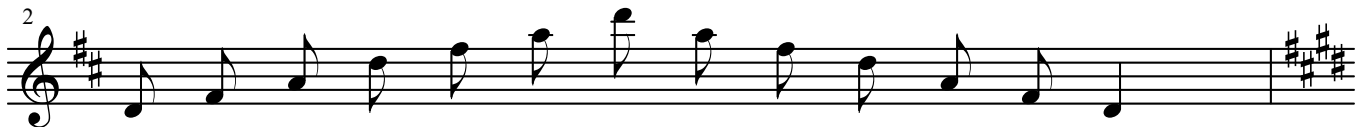


# Saxophone Major Arpeggios (#)

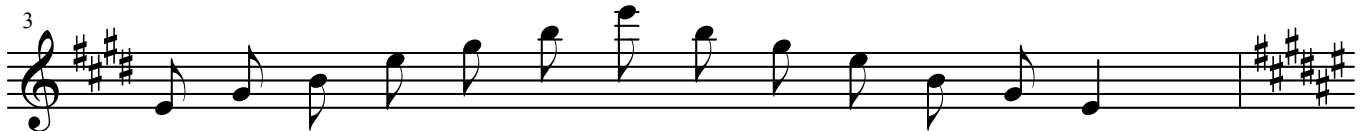
Arranged by Raymond Robinson



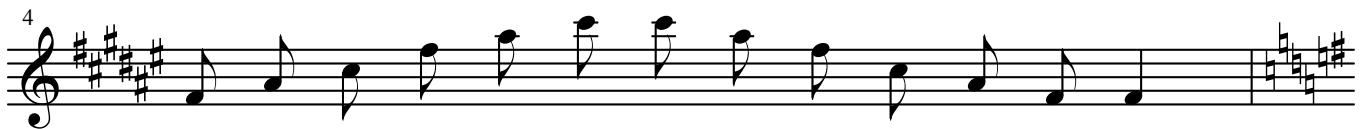
C Major (2 Octaves)



D Major (2 Octaves)



E Major (2 Octaves)



F# Major (a Twelfth)



G Major (a Twelfth)




A Major (a Twelfth)



B Major (2 Octaves)

## Major Arpeggios (#)

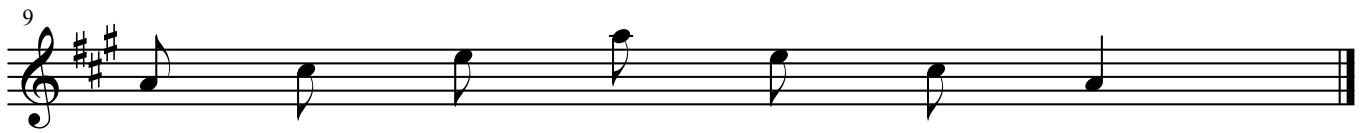
8



G Major (1 Octave)

The notation shows a treble clef with a key signature of one sharp (F#). The arpeggio starts on G4, moving up stepwise through A4, B4, C#5, D5, E5, F#5, and G5. The final measure contains a chord of G4, B4, and D5.

9



A Major (1 Octave)

The notation shows a treble clef with a key signature of two sharps (F# and C#). The arpeggio starts on A4, moving up stepwise through B4, C#5, D5, E5, F#5, and A5. The final measure contains a chord of A4, C#5, and E5.